



Flat 1 1 Woodburn Square, Douglas, Isle Of Man, IM1 4DB
Asking Price £162,500

- 2 Bedroom Apartment
- Great investment opportunity
- Great location, walking distance to town
- Private rear courtyard
- Large lounge with stunning bay window
- Parking space



Deanwood are delighted to present this attractive two-bedroom ground floor corner apartment, ideally suited to first-time buyers or investors seeking a conveniently located property close to Douglas town centre.

The apartment boasts a number of appealing period features, including impressive ceiling heights and a striking bay window that fills the main living space with natural light. The accommodation is arranged around an L-shaped hallway, providing a practical layout from front to rear.

The lounge/diner is a bright and spacious room, benefitting from dual aspect windows, original coving and a feature fireplace, with pleasant views over Woodburn Square. The kitchen is fitted with a range of wall and base units, integrated oven and hob, and space for additional appliances, with direct access to the rear courtyard.

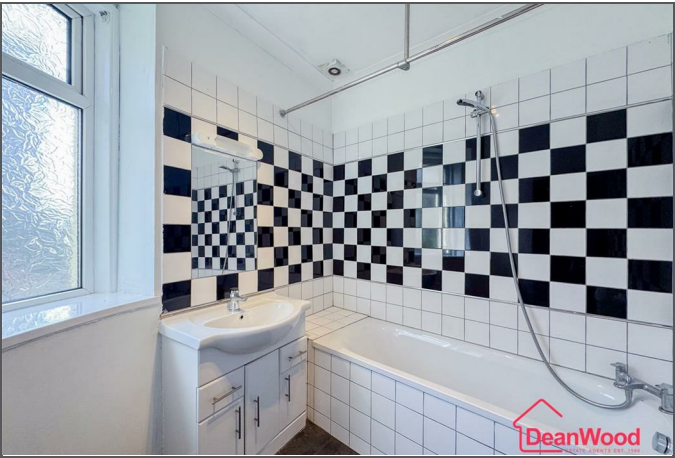
There are two bedrooms, including a generous principal bedroom to the rear with dual aspect windows, and a second bedroom to the side, complete with fitted wardrobes. The family bathroom comprises a panelled bath, WC and wash hand basin with vanity storage.

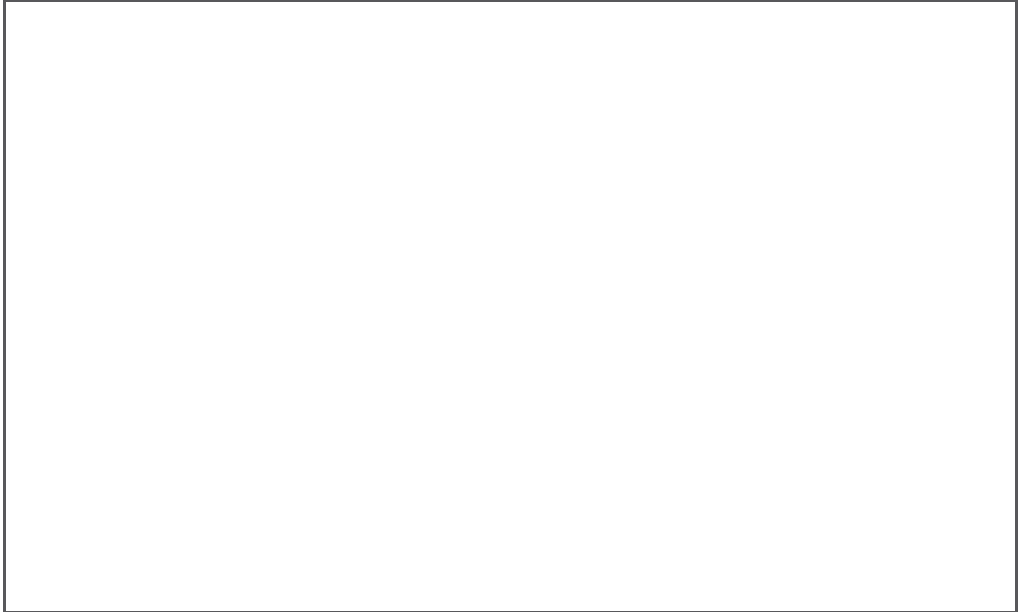
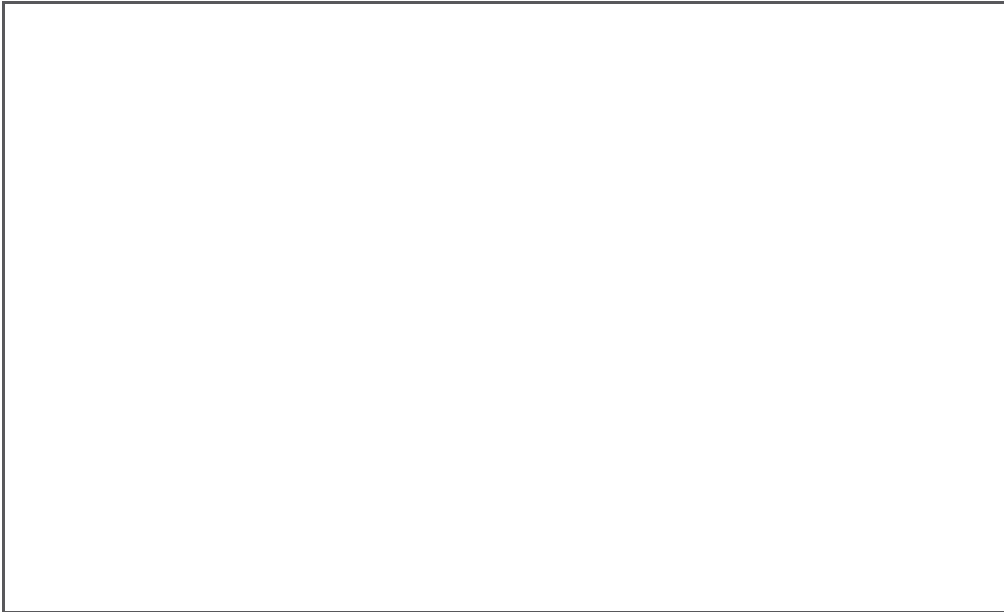
Externally, the property enjoys a privately owned front and side garden, allocated off-road parking, and access to a shared rear courtyard. The apartment has also been recently updated with new carpets throughout the main living and bedroom areas.

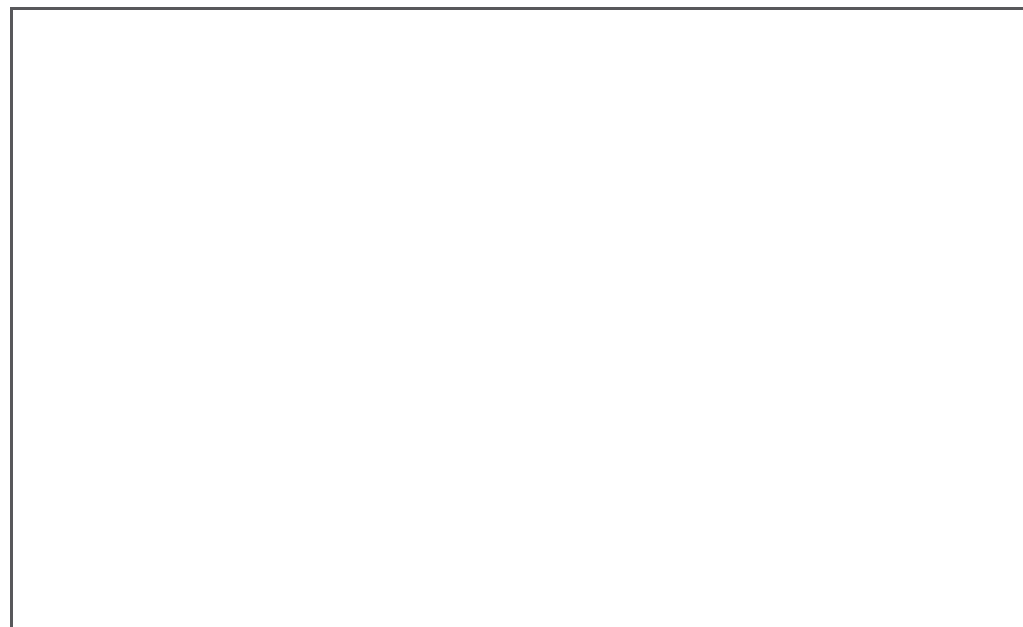
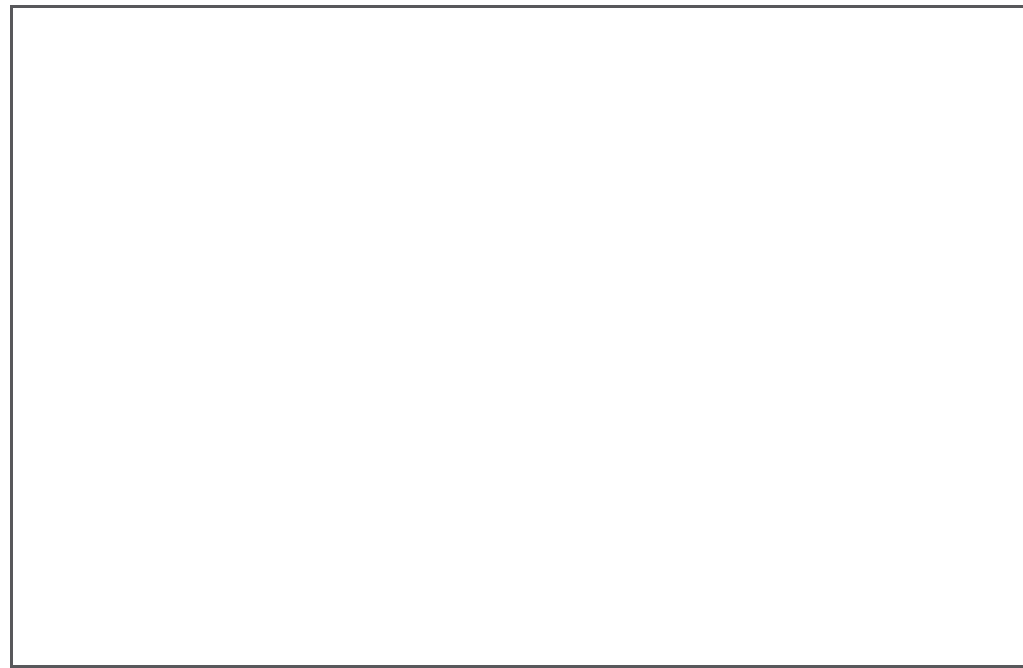
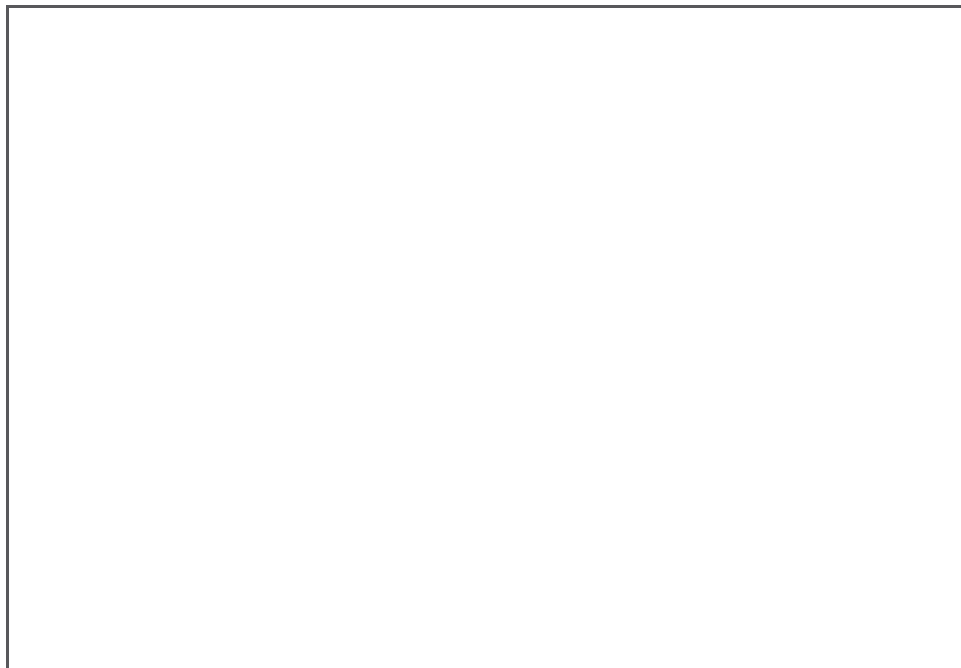
Forming part of a well-maintained freehold block of just three apartments with an active management arrangement, the property is within easy walking distance of Douglas town centre, local amenities, and nearby green spaces including Woodburn Square.













Flat 1 1 Woodburn Square, Douglas, Isle Of Man, IM1 4DB





DOUGLAS

37 VICTORIA STREET
DOUGLAS
ISLE OF MAN IM1 2LF

T 01624 620606

F 01624 677363

E info@deanwood.co.im

CASTLETOWN

COMPTON HOUSE
9 CASTLE STREET CASTLETOWN
ISLE OF MAN IM9 1LF

T 01624 825995

F 01624 825996

E castletown@deanwood.co.im

RAMSEY

LEZAYRE HOUSE
87 PARLIAMENT STREET
RAMSEY ISLE OF MAN IM8 1AQ

T 01624 816111

F 01624 816588

E ramsey@deanwood.co.im

These particulars are for information purposes only. They do not constitute or form any contract nor should any statement contained herein be relied upon as a representation of fact. Neither the vendor nor DeanWood Agencies Limited ('the firm'), nor any officer or employee of the firm accept liability or responsibility for any statement contained herein. The vendor does not by these particulars, nor does the firm, nor does any officer or any employee of the firm have any authority to make or give any representation or warranty whatsoever as regards the property or otherwise. It is the sole responsibility of any person interested in the property described in these particulars to make all proper enquiries and searches to verify the description of the property and all other particulars herein.

FOR MORE PROPERTIES VISIT OUR WEBSITE @ [deanwood.im](https://www.deanwood.im)